



# CBKA Guidance on monitoring the Yellow-Legged Hornet using a bait station



## Introduction

Following the confirmation of a Yellow-legged hornet (aka Asian hornet) nest in Runcorn on the 29<sup>th</sup> of August we are asking members to be vigilant and to set up monitoring stations. This briefing document provides guidance on how to set up a monitoring station and draws on best-practice from experience of the National Bee Unit Bee inspectors and Asian Hornet Action Teams (AHAT). It is not a comprehensive list.

Monitoring for the Yellow-legged hornet (YLH) is the mainstay of establishing if there is a presence in your area.

The CBKA **does not endorse** the use of traps to monitor YLH foragers due to the bycatch risk on beneficial invertebrates<sup>1</sup>. Monitoring stations are an open tray or container with bait, they enable invertebrates including Yellow-legged hornets if present, to visit the station to feed and fly away.

Setting up monitoring stations in your apiary will not attract YLH to your hives, YLH will be more attracted by your hives than bait stations.



## Key Participants

All CBKA members and members of the public.

## Safety

The CBKA urges caution when approaching hornets. As a group they possess poisonous venoms. These venoms are rich in toxins, enzymes, and biologically active peptides. However, while some hornet species have been known to inflict fatal stings on humans, this is unusual; death occurs only rarely when victims receive multiple stings, or because of anaphylactic shock<sup>3</sup>.

## **Best practice on placement of bait stations/traps**

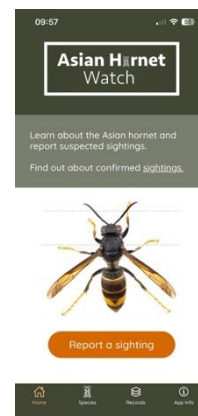
Ideally the monitoring stations should be placed in a sunny position and monitoring undertaken in 30–60-minute spells daily. The benefit of placing the bait station at home encourages regular and sustained monitoring. Experience from the AHATs is that monitoring reduces in proportion with distance from home. The exception to this is if you are monitoring a specific area triggered by a reported sighting. Detection of YLH is improved if monitoring takes place over the season, April-October<sup>2</sup>. Frequent short periods of monitoring, between 30-60 minutes sessions are recommended, this enhances the fun element.

The effectiveness of bait stations improves when placed at least 2 hours prior to monitoring, this enables vapour from the attractant to dissipate into the air to attract nearby hornets. Using a small aerosol plant mister to spray attractant can also help draw in YLH. The YLH does not fly at night so, if possible, traps should not be left overnight.

**Do not** place bait stations on the ground where they are easily accessible to children and animals.

## **Reporting findings back to the NBU**

Please take a photo of potential YLH sightings, and report on the free Asian Hornet Watch app available for Apple devices or android devices.



## **Bait stations**

A bait that will only attract the Asian hornet (*Vespa velutina*) doesn't exist, so please avoid using kill traps, only use open bait stations. A variety of types are available, however broadly you have wickless and wick types.



**Open wickless** bait station. Sponge pieces with bait can be used as an alternative to pebbles to avoid drowning of beneficial insects. Avoid over filling open type containers with liquid, ensure the attractant is below the level of pebbles

**Wick-type** bait stations reduce the “theoretical” risk of drowning beneficial invertebrates. Our AHAT team haven’t experienced any drowning of invertebrates using open bait stations

- Anecdotal evidence suggests that wick-type bait stations do not induce the “tanking” behaviour of hornets, i.e., gorging on the attractant encourages return trips and boosts visits by nest-mates



- Simplest solution is to recycle a plastic takeaway container
- Add stones, twigs, or sponge pieces
- Either fill with  $\cong$  50-100ml of commercial bait, or homemade bait recipe

### **What can I use as an attractant (bait)?**

If using commercial attractants, ensure they are licensed for sale to the public (e.g., Sunterra’s Trappit® Wasp Bait) and wear any personal protective equipment recommended by the manufacturer. Trappit® is a sweet bait that contains a bee deterrent, and can be used throughout the year, as hornets always need to feed on sugars for energy. Other commercial wasp baits are available.

During the summer at the height of the beekeeping season, worker hornets forage for protein sources to feed the larvae. To make a protein bait, raw meat or fish with water can be used. The NBU have used protein baits consisting of mashed fish or prawns, diluted to 25% in water. If you choose to use a protein bait, it will need changing after 3 days due to decay and an unpleasant aroma.



## Alternative 'homemade' bait recipes

AHAT experience suggest there is minimal difference between homemade bait attractants and commercially available products. Homemade bait recipes should only include food stuffs e.g., fruit juices, brewers' yeast, ales, sugar. Avoid using sugar-free versions of cordial

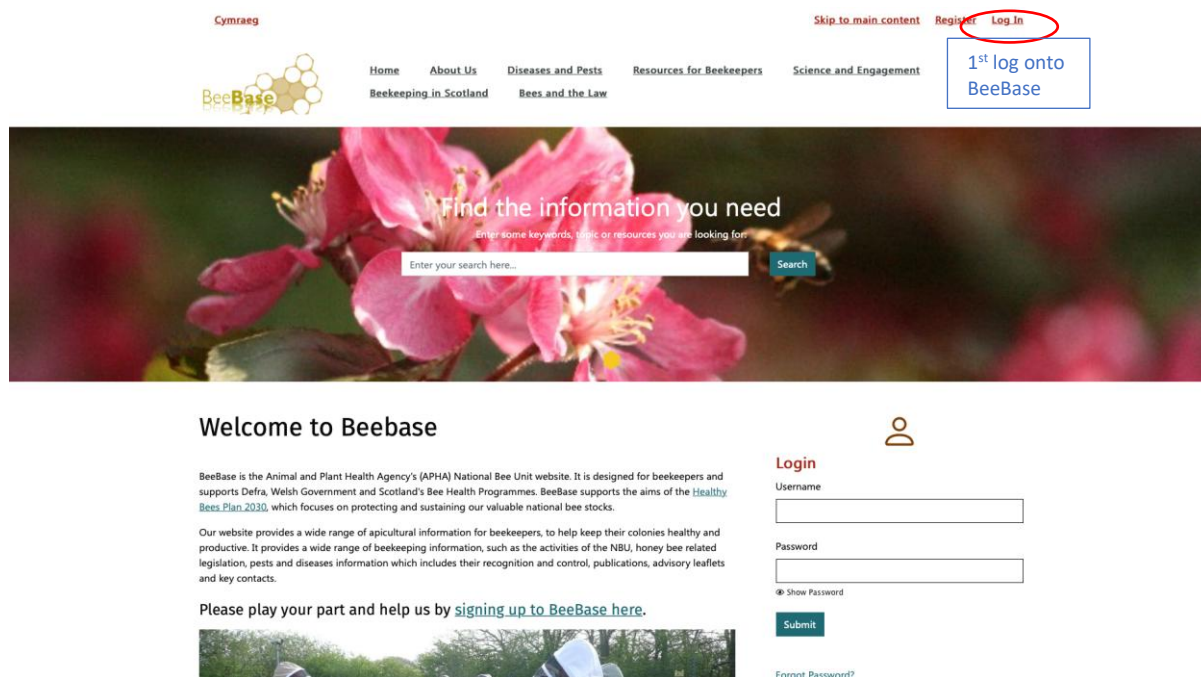
- 500m dark beer add 1 tbsp sugar
- 1 cup blackcurrant cordial, add 500ml dark beer
- 500ml water, 3 tbsp sugar add 1cup cider vinegar
- Equal parts of blackcurrant cordial, white wine & cider vinegar



## Reporting monitoring sites

The NBU Bee Inspectors, branch committees, AHAT and I need visibility of monitoring stations across the county. I appreciate you are all busy however a couple of minutes to register on **both** *BeeBase* & *AHA CATCH App* will allow us to notify you more promptly about sightings when a nest is confirmed and help us evaluate where we have gaps in geography.

**BeeBase instructions** <https://www.nationalbeeunit.com>



The screenshot shows the BeeBase website. At the top, there is a navigation bar with links: Home, About Us, Diseases and Pests, Resources for Beekeepers, Science and Engagement, Beekeeping in Scotland, and Bees and the Law. A search bar is also present. Below the navigation bar, there is a large banner with the text "Find the information you need" and a search input field. To the right of the banner, there is a box with the text "1st log onto BeeBase". Below the banner, there is a "Welcome to Beebase" section with a brief description of the website and a link to "signing up to BeeBase here". To the right of this section, there is a "Login" form with fields for Username and Password, a "Show Password" link, a "Submit" button, and a "Forgot Password?" link.

Cymraeg

Skip to main content Register Log In

BeeBase

Home About Us Diseases and Pests Resources for Beekeepers Science and Engagement  
Beekeeping in Scotland Bees and the Law

1st log onto BeeBase

Find the information you need

Enter some keywords, topic or resources you are looking for

Enter your search here... Search

Welcome to Beebase

BeeBase is the Animal and Plant Health Agency's (APHA) National Bee Unit website. It is designed for beekeepers and supports Defra, Welsh Government and Scotland's Bee Health Programmes. BeeBase supports the aims of the [Healthy Bees Plan 2030](#), which focuses on protecting and sustaining our valuable national bee stocks.

Our website provides a wide range of apicultural information for beekeepers, to help keep their colonies healthy and productive. It provides a wide range of beekeeping information, such as the activities of the NBU, honey bee related legislation, pests and diseases information which includes their recognition and control, publications, advisory leaflets and key contacts.

Please play your part and help us by [signing up to BeeBase here](#).

Login

Username

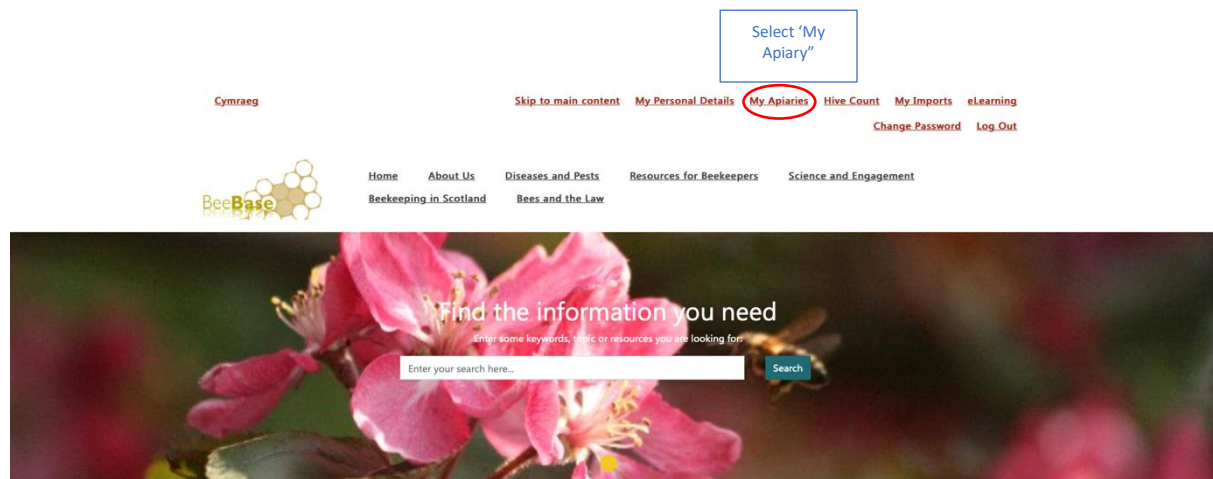
Password

Show Password

Submit

[Forgot Password?](#)





## Welcome to Beebase

Welcome Christopher Cornwell-Lee


BeeBase is the Animal and Plant Health Agency's (APHA) National Bee Unit website. It is designed for beekeepers and supports Defra, Welsh Government and Scotland's Bee Health Programmes. BeeBase supports the aims of the [Healthy Bees Plan 2030](#), which focuses on protecting and sustaining our valuable national bee stocks.

Our website provides a wide range of apicultural information for beekeepers, to help keep their colonies healthy and productive. It provides a wide range of beekeeping information, such as the activities of the NBU, honey bee related legislation, pests and diseases information which includes their recognition and control, publications, advisory leaflets and key contacts.

Please play your part and help us by [signing up to BeeBase here](#).

## Latest News





[Home](#)[About Us](#)[Diseases and Pests](#)[Resources for Beekeepers](#)[Science and Engagement](#)[Beekeeping in Scotland](#)[Bees and the Law](#)

## My Apiaries

Name: Christopher Cornwell-Lee  
Access Level: Beekeeper  
ID: 32023


### Add New Apiary

#### Current Apiaries

Select 'Edit Apiary'

Apiary ID	Name & Address	Location	Apiary Density Within 10KM	Known Risk	Yellow-Legged Hornet Monitoring	Status	Last NBU Inspection	Options
68614	Briar Cottage  Long Lane Haughton Moss Tarporey CW6 9RG	Cheshire SJ5745956225	84	None within 3km in last 3 years	Selective traps: No Monitoring stations: Yes	VSA: No ESA: No Shared apiary: No Varroa present: Yes Current apiary: Yes ( <a href="#">Make apiary non-current</a> ) No. of Colonies: 3	2017-08-28 00:00:00	<div>Edit Apiary</div> <div>View History</div> <p>It is not possible to delete your only apiary, or an apiary that has been previously inspected</p>

Cymraeg [Skip to main content](#) [My Personal Details](#) [My Apiaries](#) [Hive Count](#) [My Imports](#) [eLearning](#) [Change Password](#) [Log Out](#)

 [Home](#) [About Us](#) [Diseases and Pests](#) [Resources for Beekeepers](#)  
[Science and Engagement](#) [Beekeeping in Scotland](#) [Bees and the Law](#)

---

## My Apiaries


### Edit My Apiary

My ID Number	32023
Apiary ID Number	68614
Apiary Name	Briar Cottage (Mandatory field)
Address Line 1	Long Lane
Address Line 2	Houghton Moss
Address Line 3	Tarporley
Address Line 4	
County	Cheshire (Mandatory field)
Current?	<input checked="" type="radio"/> Yes <input type="radio"/> No (Mandatory field)
Varroa Present?	<input checked="" type="radio"/> Yes <input type="radio"/> No (Mandatory field)
Number of Your Colonies in Apiary	3 (Mandatory field)
Yellow-Legged Hornet Monitoring	<input checked="" type="checkbox"/> (Mandatory field)
Selective traps	Trap has no release function and/or no daily monitoring takes place. New Trap Installed: 11/07/2025
Monitoring stations	Trap contains a screen that prevents insects falling into it and is monitored daily to allow release of native insects. Monitoring Trap Installed: 31/08/2025 to 11/09/2025

Select 'Yellow-legged hornet monitoring' and update records

**<sup>4</sup>AHA CATCH App.** <https://catch.asianhornetalert.org.uk/login>


AHA CATCH is a Mapping Database System intended to assist in the management, coordination, and administration of volunteer activities to combat the Yellow-legged Asian Hornet incursion into the UK. It is a webpage, not an App to be downloaded. All data is stored centrally on the cloud.

 [Home](#) [User](#) [Admin](#)

## LOGIN

Email


Password

☐ I'm not a robot 

[LOGIN](#)

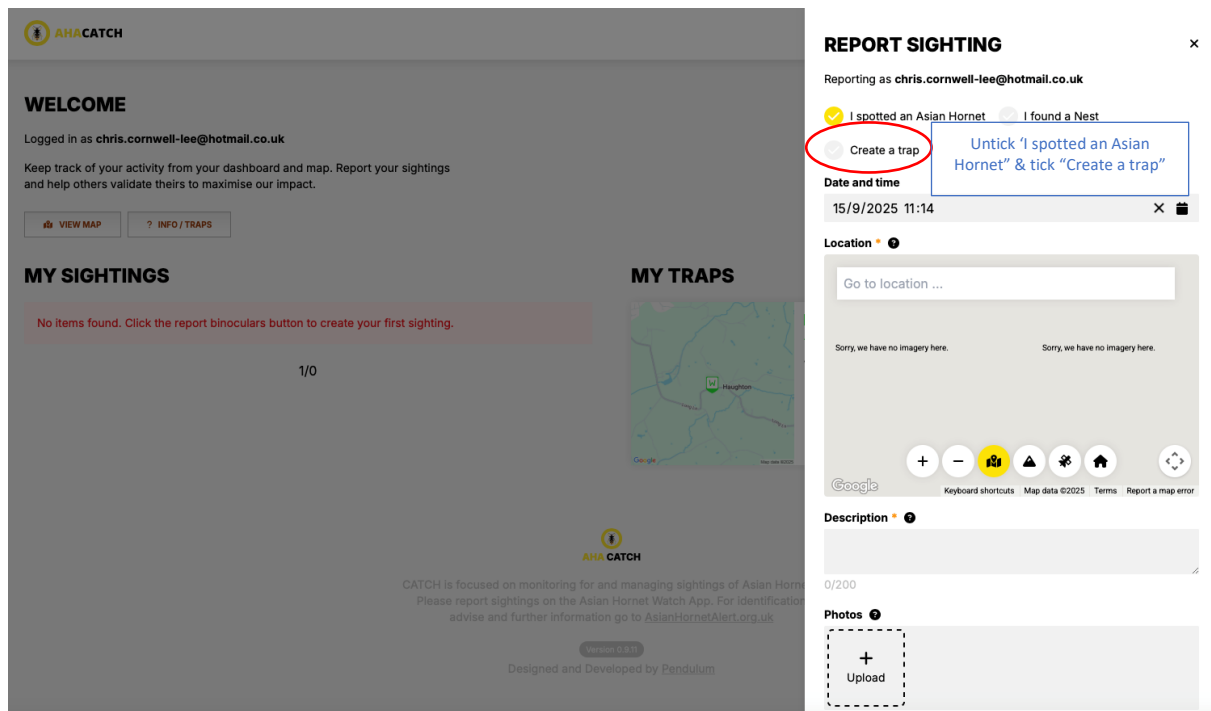
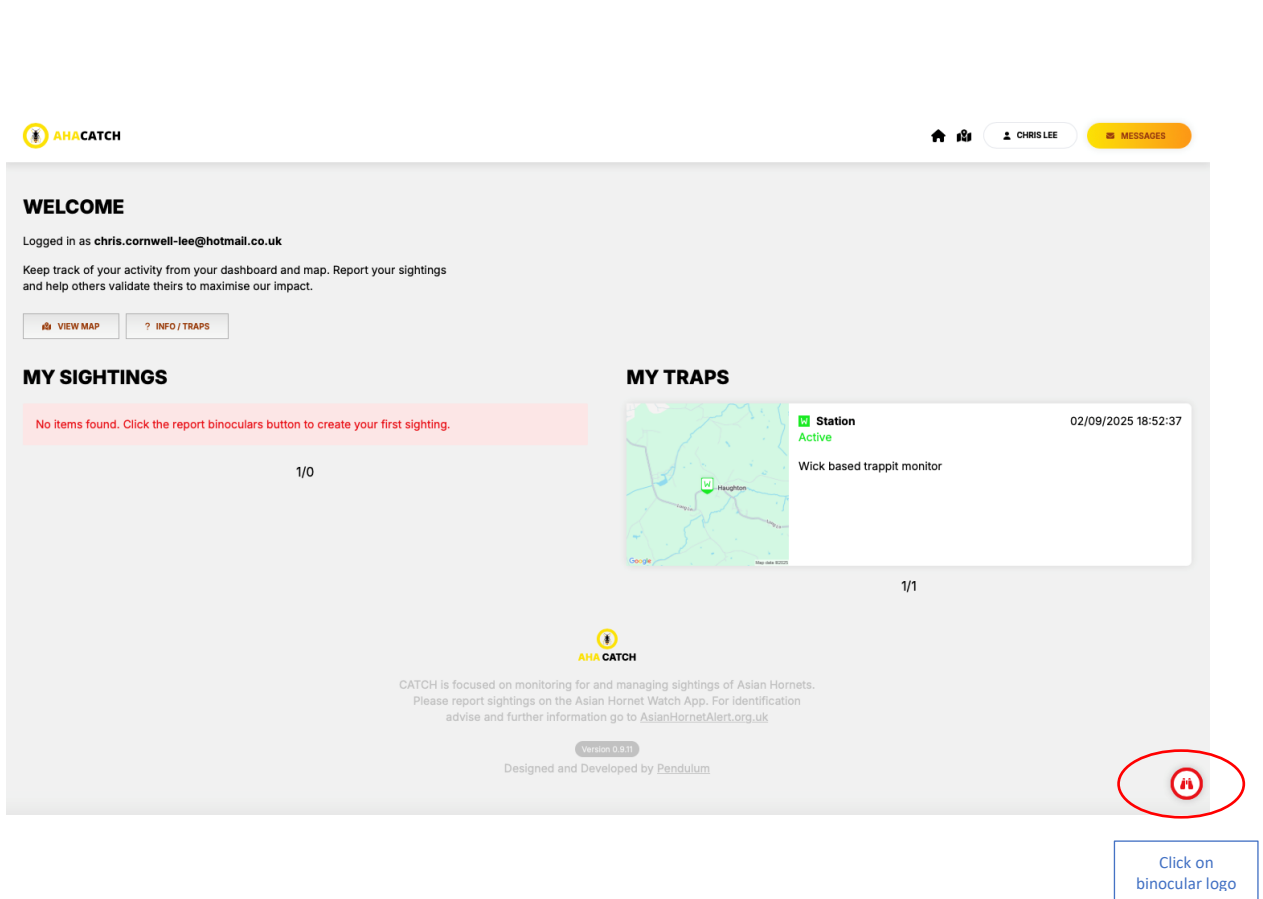
Don't have an account? [Register now.](#)  
 Forgotten your password? [Reset password.](#)

Select "Register now" and enter details



CATCH is focused on monitoring for and managing sightings of Asian Hornets. Please report sightings on the Asian Hornet Watch App. For identification advice and further information go to [AsianHornetAlert.org.uk](https://AsianHornetAlert.org.uk)

Version 1.0  
 Designed and Developed by Pendulum



Please join the CBKA YLH monitoring App. An excellent resource to ask questions and post pictures of monitoring stations and insect visits.



#### References

<sup>1</sup>The Asian Hornet (*Vespa velutina*) Threats Biology & Expansion. Prof Stephen John Martin, Northern Bee Books

<sup>2</sup>Fact\_01\_Asian\_Hornet\_Monitoring/National Bee Unit Yellow-legged hornet monitoring September 2024

<sup>3</sup> <https://antrimandnewtownabbey.gov.uk/getmedia/>

<sup>4</sup>CATCH App [https://learning.bbka.org.uk/pluginfile.php/14910/mod\\_folder/content/0/AHA%20Catch%20Overview%202025.pdf](https://learning.bbka.org.uk/pluginfile.php/14910/mod_folder/content/0/AHA%20Catch%20Overview%202025.pdf)